



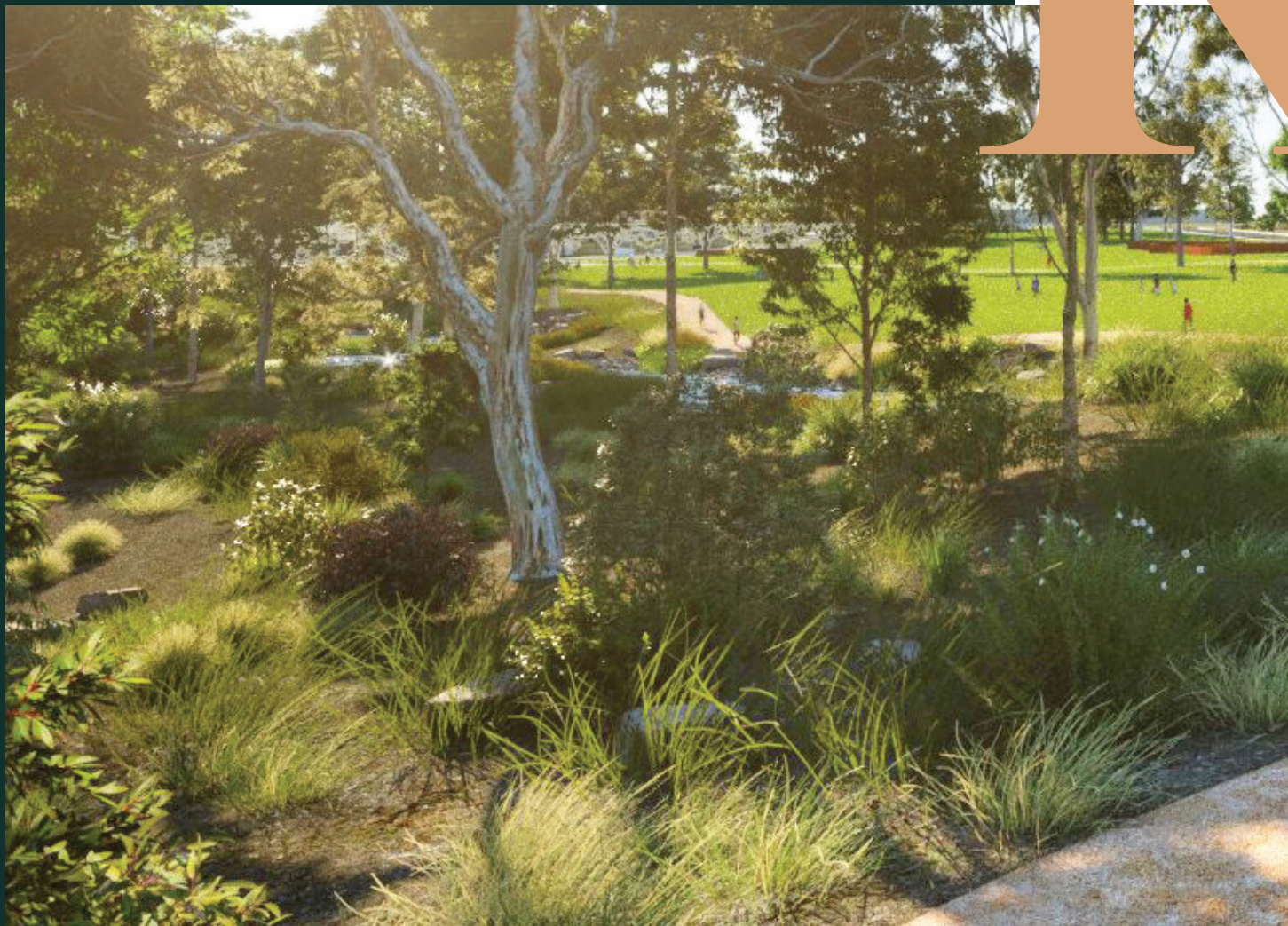
Kynetone  
on riverside

*One of a kind*

# A One of a Kind Neighbourhood is flourishing.

A rare masterplanned community beside the Campaspe River, in a coveted 6-star location at the heart of town.

Live beautifully connected to cafés, Piper Street, the train station, schools, parklands and everything that makes Kyneton one of Victoria's most admired regional destinations.





*Artist Impression*

# One of a Kind. In Every Way.

Kyneton On Riverside is a once-in-a-generation neighbourhood shaped by nature, heritage and exceptional convenience.

The vision has always been bigger than creating a neighbourhood. From the outset, the goal was to build a community that enriches lives — to bring this to life, we partnered with **Hatch RobertsDay**, Australia's leading town planning and urban design consultancy.

With more than 20 years of expertise in place-making, planning, design and architecture, Hatch RobertsDay are known for turning vision into meaningful, sustainable and celebrated places.

Together, we've crafted a masterplan that honours Kyneton's history while embracing a modern lifestyle.

***This includes:***

- A strong town identity that reflects heritage.
- Landscaped streetscapes, riverside walking trails and community spaces.
- Sustainable design features that protect and enhance the natural environment.

# one of a kind





Artist Impression



Artist Impression

Proposed amphitheater

# A 6-Star Location at the Heart of Town

Location is everything — and this address has it all.

Perfectly positioned close to the town centre, Kyneton On Riverside places daily essentials and lifestyle experiences within easy reach.

Walk, ride or drive to:

- Piper Street dining and boutiques
- Kyneton Train Station
- Schools and childcare
- Woolworths and everyday shopping
- Medical services and hospital
- Botanic Gardens and parklands
- Sporting grounds and recreation
- Historic town centre cafés and culture

**This is connected regional living without compromise.**



# the address



# press

# Amenities & Locations

## One of a Kind Because Kyneton Is One of Victoria's Best Towns.

Kyneton is admired for good reason.

Historic streets, celebrated cafés, boutique retail, galleries, farmers markets and a genuine local spirit make it one of regional Victoria's most desirable destinations - its loving known as the foodie gateway to the Macedon Ranges.

**When you live here, you're part of something special.**

### Places to Eat

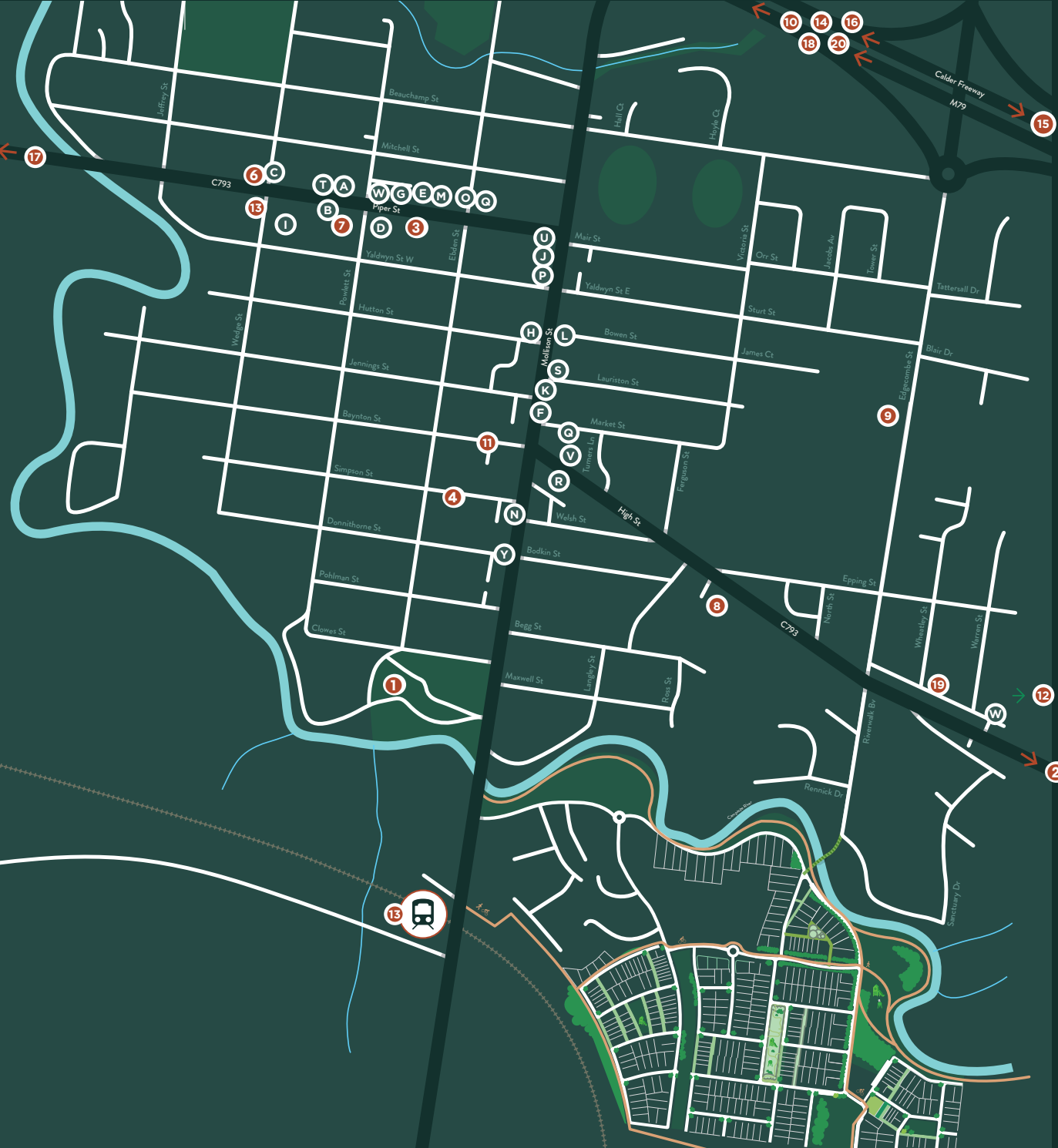
- A The Piper Street Wine Company 2.7km (5mins)
- B Prato 2.6km (5mins)
- C Courtyard Kyneton 2.9km (5mins)
- D Major Tom's Burger & Bar 2.6km (5mins)
- E Twenty 9 Piper 2.5km (6mins)
- F The Kyneton Hotel 1.8km (4mins)
- G Little Swallow Cafe 2.6km (5mins)
- H Monsieur Pierre 2km (4mins)
- I Piper Street Food Co + Workshops 2.9km (5mins)
- J Sisko Chocolate 2.2km (5mins)
- K The Shamrock Hotel 1.9km (4mins)
- L Sideshow Burgers 2km (4mins)
- M The Royal George Hotel 2.5km (5mins)
- N The Albion 3mins (1.5km)
- O Dhabi at the Mill 2.4km (5mins)
- P Watt's Fresh 2.1km (5mins)
- Q Social Foundry 1.8km (4mins)
- R Donkey Fried Chicken 1.8km (4mins)
- S The Original Country Cob Bakery 1.9km (4mins)
- T Fook Shing 2.8km (6mins)
- U Mollison's Fish & Chips 2.1km (4mins)
- V Pollen 1.8km (4mins)
- W Fika Cafe 3.5km (6mins)
- X Midnight Starling 2.2km (5mins)
- Y Kyneton RSL 1.5km (3mins)

### Places of interest

- 1 Botanic Gardens & Community Park 1.3km (2mins)
- 2 Paramoor Winery 14km (15mins)
- 3 Farmers Market 2.5km (5mins)
- 4 Woolworths 2.2km (4mins)
- 5 Town Hall 2km (4mins)
- 6 Stockroom Kyneton 2.9km (6mins)
- 7 Museum 2.7km (6mins)
- 8 Sacred Heart College 2.3km (5mins)
- 9 Kyneton Primary & High School 3km (6mins)
- 10 Racecourse 4.4km (9mins)
- 11 Library 2.1km (4mins)
- 12 Hospital 3.5km (6mins)
- 13 Train Station 1.1km (2mins)
- 14 Campaspe Mill Distillery 8.7km (11mins)
- 15 Hanging Rock & Winery 22km (19mins)
- 16 Kyneton Mineral Springs Reserve 5.6km (8mins)
- 17 Daylesford 36km (32mins)
- 18 Castlemaine 38km (35mins)
- 19 Info Visitor Centre 2.8km (5mins)
- 20 Kyneton Ridge Estate 11km (14mins)
- 21 Kyneton Toyota Sports & Aquatic Centre 2.4km (5mins)



# Township Map







# More Life. Less Rush.

---

Life here moves at the right pace.

There's time for riverside walks, weekends exploring cellar doors, long lunches with friends and spontaneous afternoons in town. You'll enjoy the balance so many are searching for — space to breathe, yet everything close by.

Whether you're starting out, raising a family, downsizing or making a tree change, Kyneton On Riverside gives you room to live well.

**Because luxury today isn't excess. It's time, ease and freedom.**

# enjoy

# wine dine repea



# Dine. Sip. Repeat.

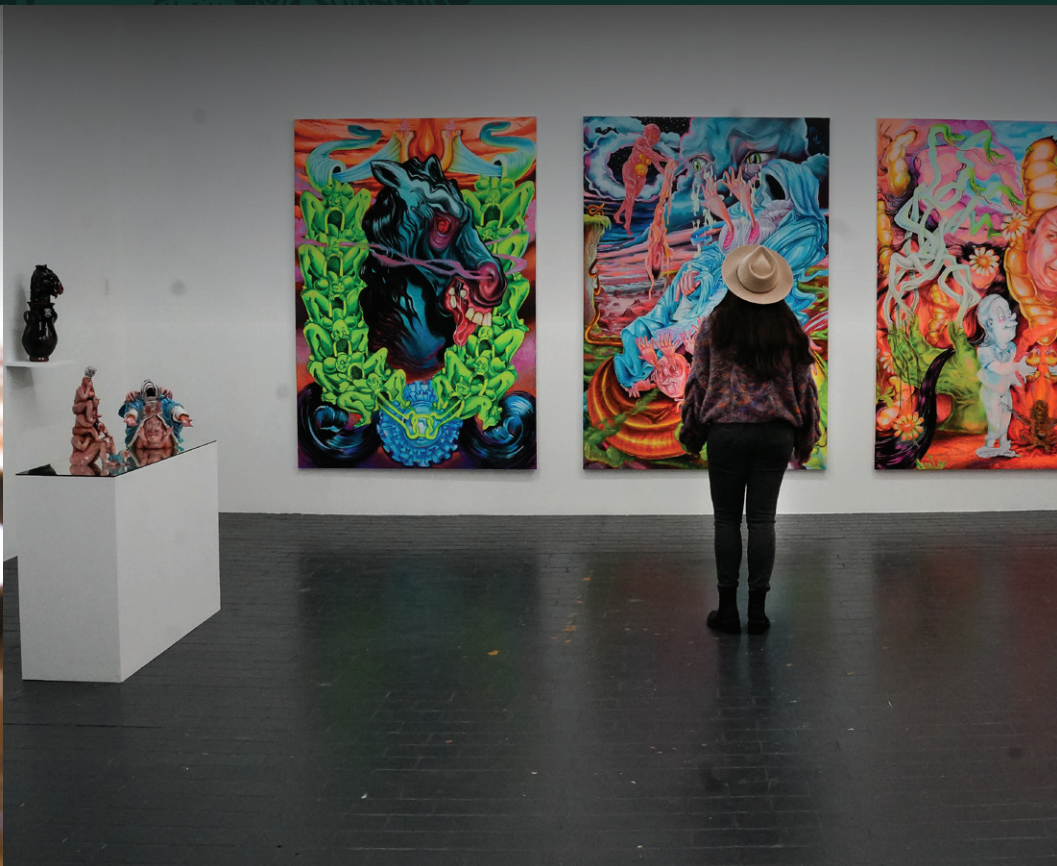
Few regional towns rival Kyneton for culinary culture.

Enjoy acclaimed restaurants, relaxed cafés, artisan bakeries and produce-driven menus shaped by the Macedon Ranges region.

Nearby wineries, cellar doors and distilleries turn weekends into experiences worth repeating.

From casual brunches to special celebrations, exceptional dining is part of everyday life here.

1



# Development Stages

## A Neighbourhood Designed to Belong

Great communities don't happen by chance.

Kyneton On Riverside has been thoughtfully masterplanned to foster connection, walkability and a strong neighbourhood spirit.

Tree-lined streets, pocket parks, open space and places to gather create an environment where neighbours become friends and families grow together.

**A place to know people.**

**A place to feel part of something.**



# convenience



A masterplanned community that ticks all the boxes.



**Town Centre**  
4mins



**Train Station**  
1min



**Melbourne**  
60mins



**Bendigo**  
52mins



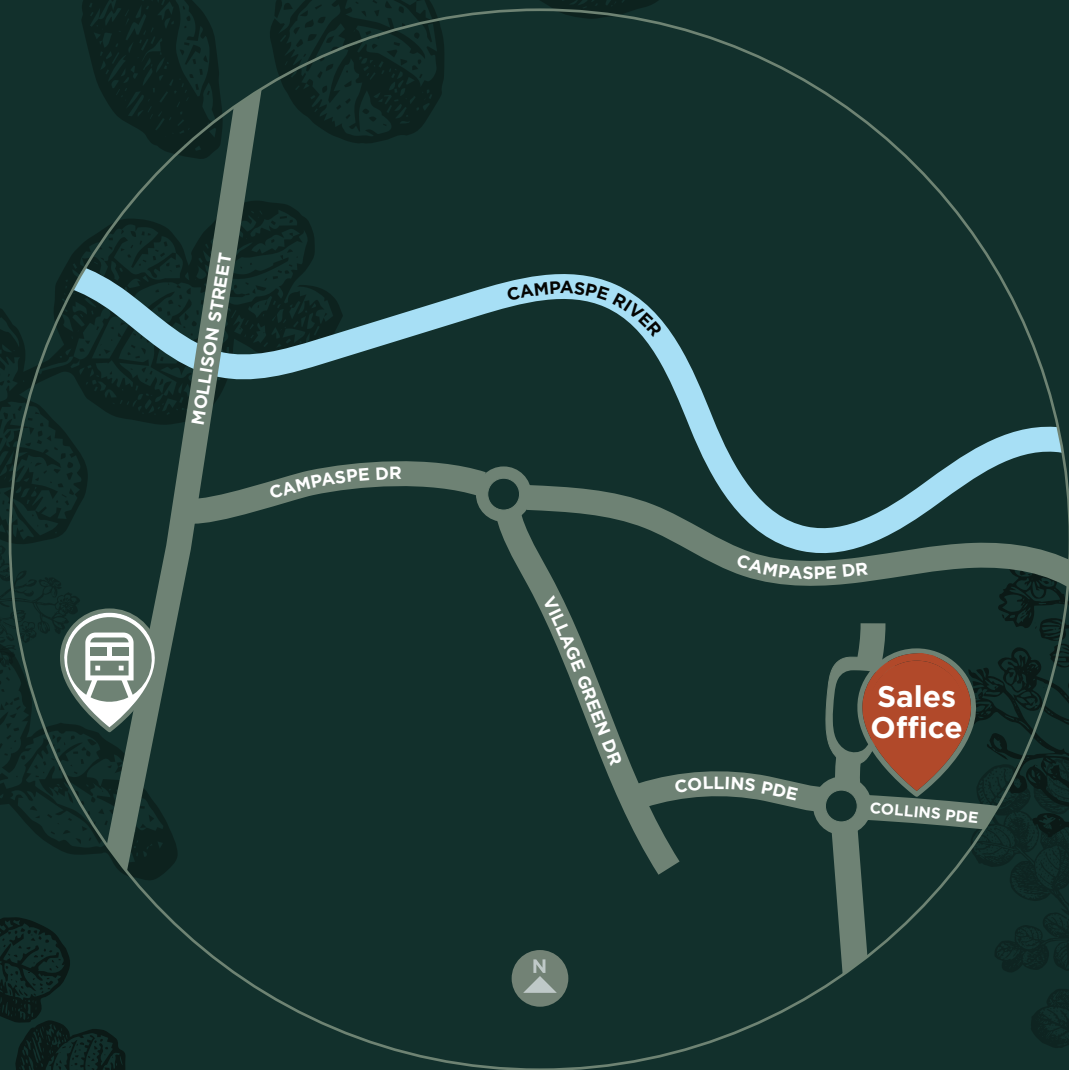
**Botanic Gardens**  
2mins



**Schools, College**  
5mins



**Hospital**  
6mins



**K** Kyneton  
on riverside  
*One of a kind*

**Call (03) 5460 1283**  
Collins Parade, Kyneton VIC 3444  
Sales Office Open by appointment only, visit:  
[kynetononriverside.com.au](http://kynetononriverside.com.au)

Scan to  
Book a Tour



**Disclaimer:** While we have taken care to ensure the accuracy of information on this brochure at the time of publication, Kyneton on Riverside gives no warranty and makes no representation as to the accuracy or sufficiency of any description, photograph, illustration or statement contained in this brochure and accepts no liability for any loss which may be suffered by any person who relies upon the information presented. Except for any liability that cannot be excluded by law, Kyneton on Riverside will not be liable or responsible for any loss or damage suffered or incurred by any person who relies upon any information provided in this brochure. All information provided is subject to change without notice. Purchasers should make their own enquiries and satisfy themselves as to whether the information and pricing provided is current and correct and if appropriate seek advice before entering any contract.